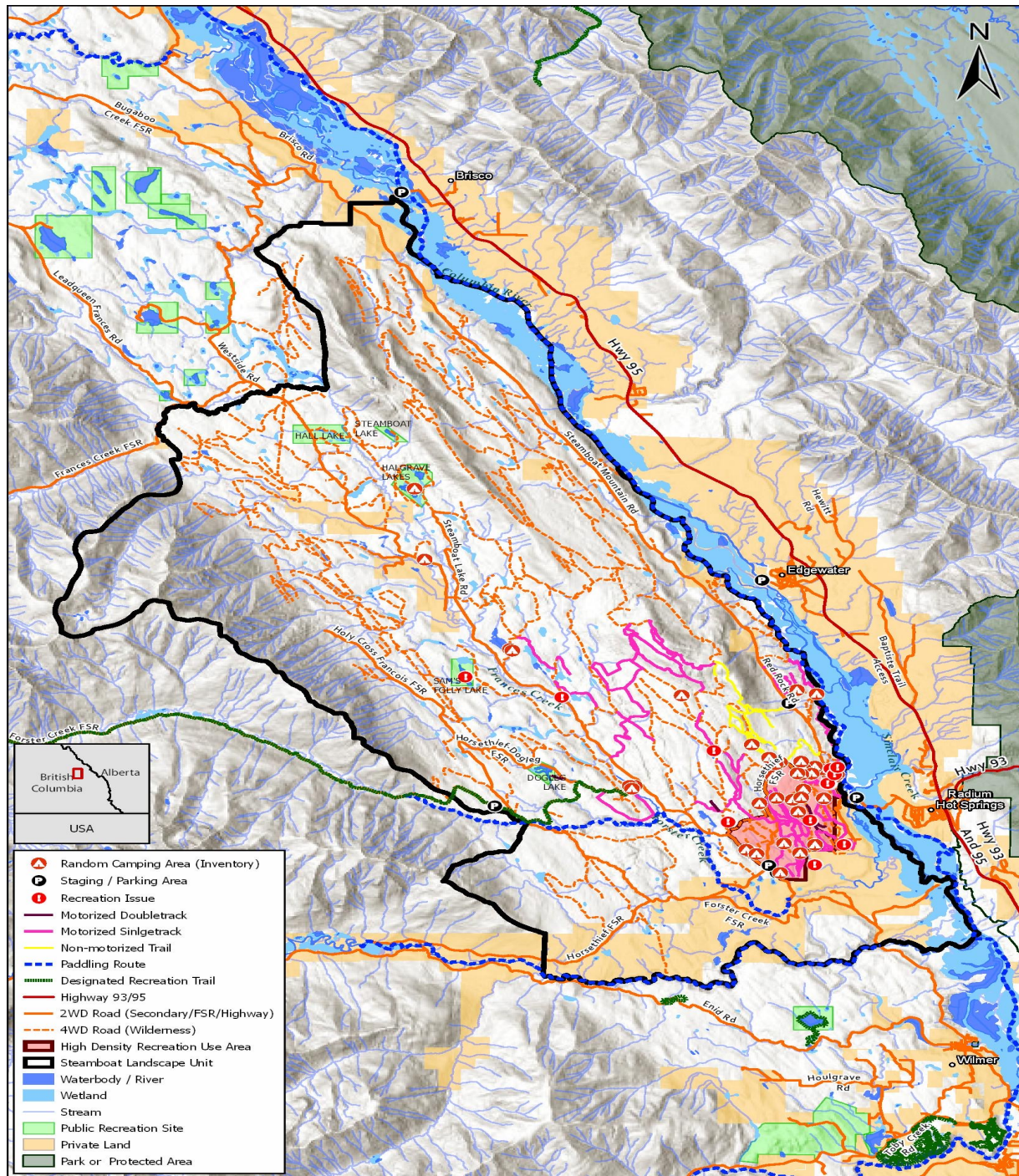


CWSP Participation in the Columbia Valley Recreational Planning Initiative

- CWSP provided much of Michael Proctor's wildlife information on habitats and corridors in the Radium Corridor (Steamboat Timber Supply Area).

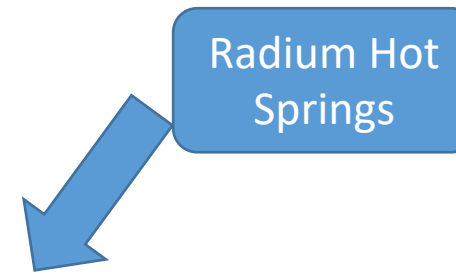
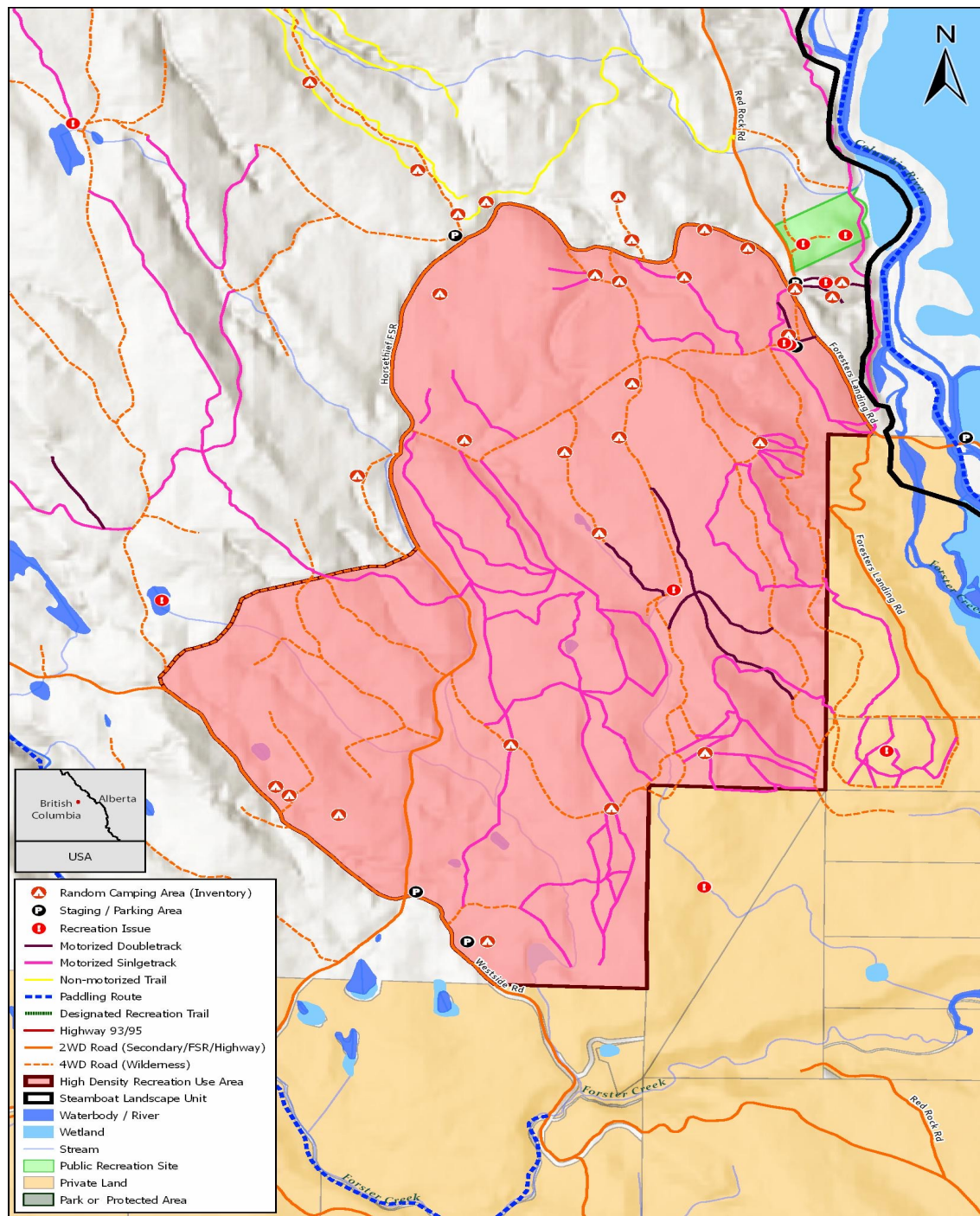
Existing policy and regulations provide no way to stop random camping & recreation use in wildlife habitat & corridors



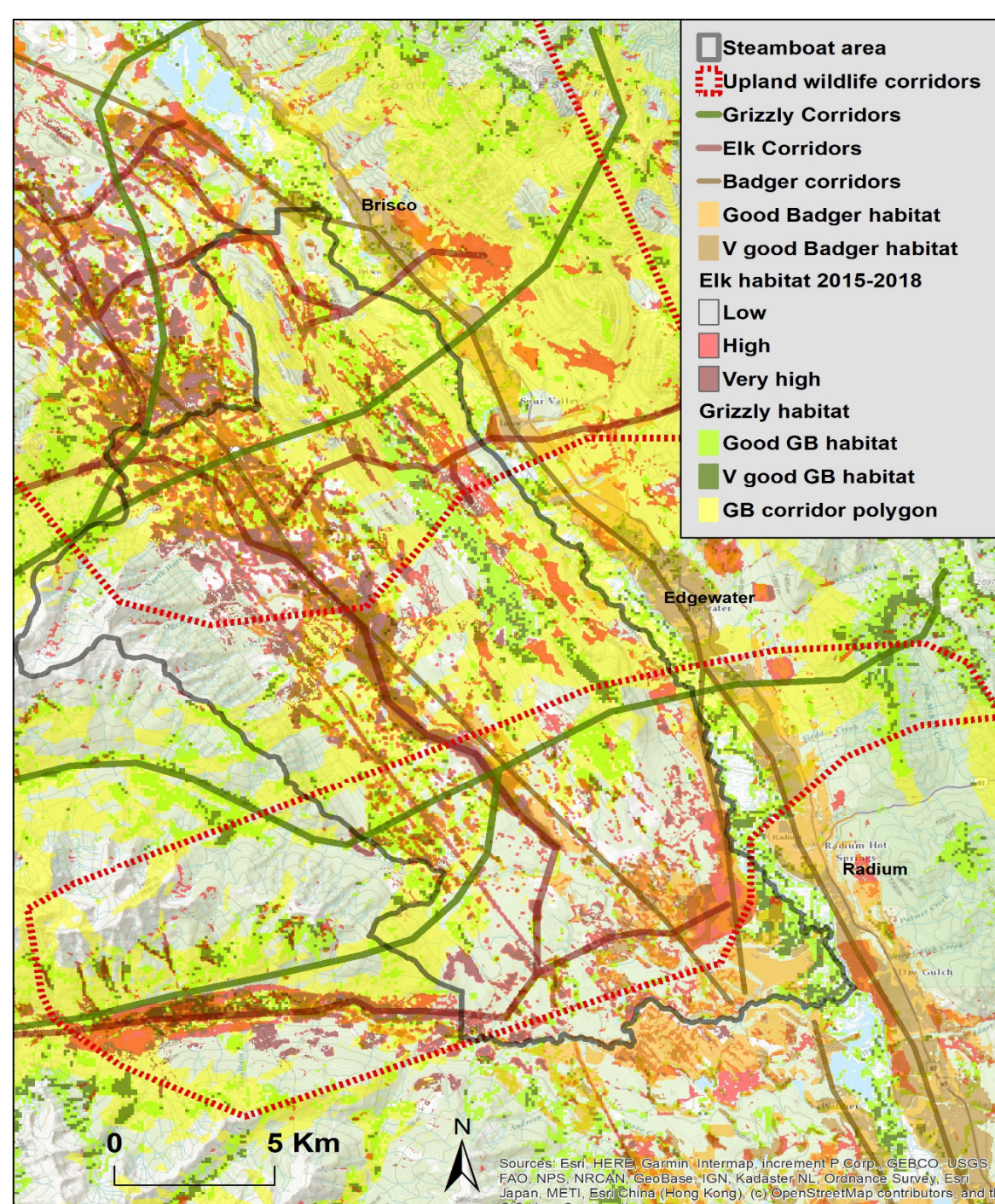


Columbia Valley Recreation Planning Initiative: Steamboat Recreation Use Inventory

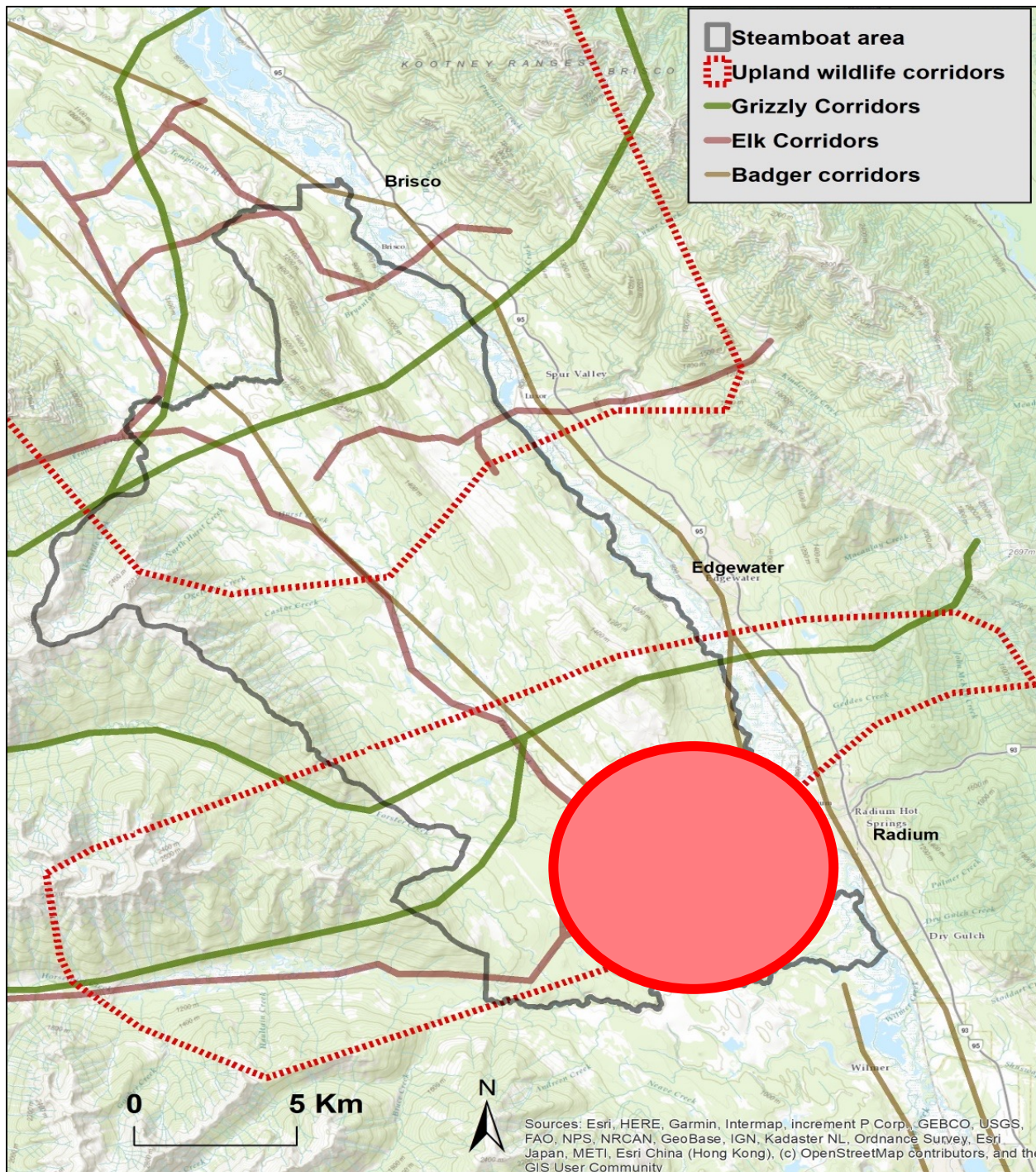
- 17 km of non-motorized trails (mountain bike trails),
- 116 km of secondary roads (2WD and Forest Service Roads)
- 357 km of 'wilderness' road - unmaintained roads,
- 43 locations with random camping



Steamboat Recreation Use Inventory High Density Area



Wildlife corridors & habitats in Steamboat Area : CWSP & KC project



Main Wildlife Corridors in the Steamboat Area (CWSP & Kootenay Connect project)

How each activity disturbs elk

High volume trail use creates an impact zone avoided by wildlife

Distance from each side of trail that elk will flee. *

Hiking:
400 meters



Horse:
550 meters



Biking:
750 meters



ATV:
1350 meters



- * Study by US Forest Service and State of Oregon, using collared elk
- 20% probability point for one disturbance